



employee assistance



ACI
SPECIALTY
BENEFITS

ACI's Employee Assistance Program (EAP) provides professional and confidential services to help employees and family members address a variety of personal, family, life, and work-related issues.

Confidential and professional assessment and referral services for employees and their family members

EAP and Work/Life Benefits:

From the stress of everyday life to relationship issues or even work-related concerns, the EAP can help with any issue affecting overall health, well-being and life management.

- 3 Sessions per Year of Professional Assessment for Employees and Family Members
- Unlimited Child Care and Elder Care Referrals
- Legal Assistance for unlimited number of issues per year
- Financial Consultation for unlimited number of issues per year
- Unlimited Pet Care Consultation
- Unlimited Education Referrals and Resources
- Unlimited Identity Theft Recovery Referrals
- Unlimited Referrals and Resources for any Personal Service
- Unlimited Community-based Resources
- Live 'N Learn Employee Trainings
- Online Legal Resource Center
- Affinity™ Online Work/Life Website
- myACI App for Mobile Access
- Monthly HealthYMail Newsletters
- Multicultural and Multilingual Providers Available Nationwide

EAP benefits are prepaid by your employer, 100% confidential, available to all family members regardless of location, and easily accessible through ACI's 24/7 live-answer toll free number.

SCORE Cities Include:

- | | | |
|--------------------|------------------------|----------------------|
| • City of Biggs | • City of Live Oak | • City of Susanville |
| • City of Colfax | • City of Loyalton | • City of Tulelake |
| • City of Dunsmuir | • City of Mount Shasta | • City of Weed |
| • City of Etna | • City of Portola | • City of Yreka |
| • City of Isleton | • City of Shasta Lake | • Town of Loomis |

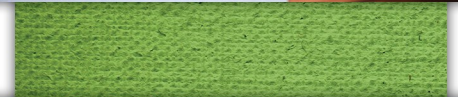
Additional Questions?

Contact Human Resources or contact ACI Specialty Benefits directly at

800.932.0034

eapinfo@acispecialtybenefits.com

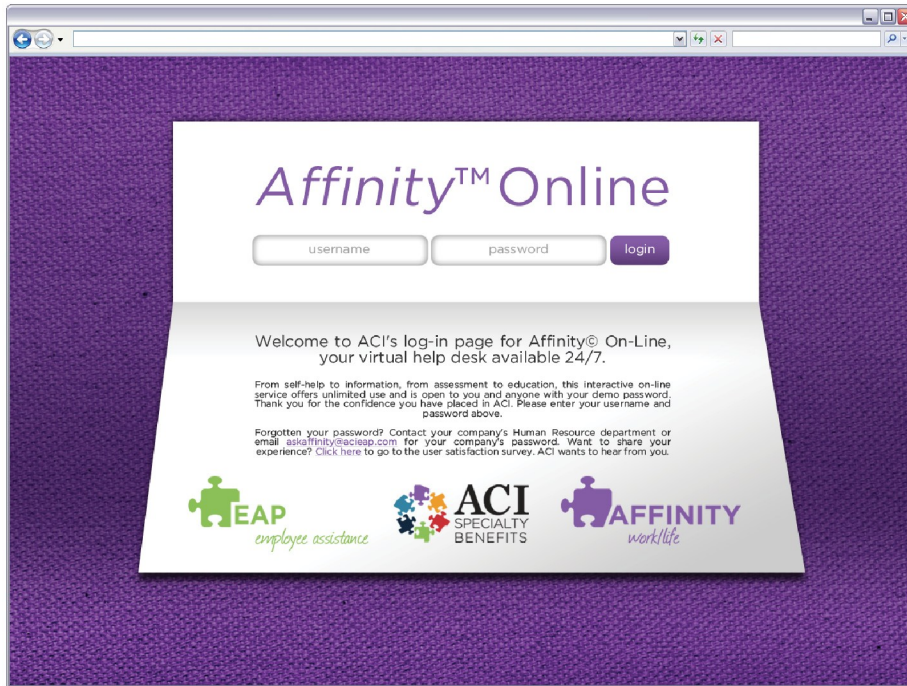
<http://score.acieap.com>



SCORE
Small Cities Organized Risk Effort



Start Using Your *Affinity*TM Online



To access the
AffinityTM Online
Website:

1. Go to www.affinity-online.com
2. In the login page, enter the company user name: **score**
3. Enter the company password: **aci**

AffinityTM Online features self-help tools, resources and answers at any time of the day or night from any internet-connected computer. It is completely anonymous so privacy is assured. Best of all, it is free! No matter how often it is used, it is provided to your company at no additional cost.

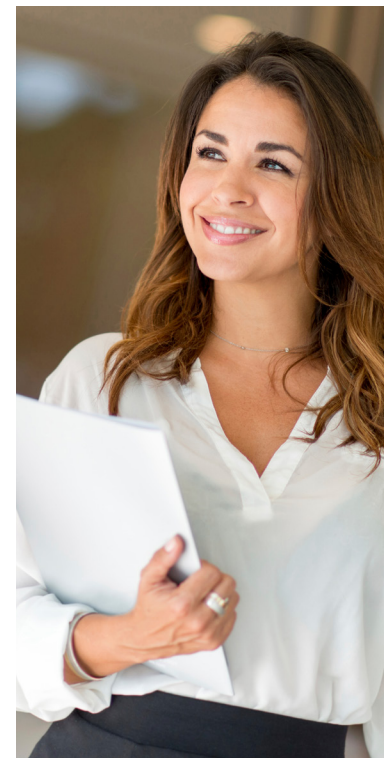


At **Affinity**TM Online you'll find more than 300 programs prepared, revised and constantly updated addressing a range of topics focusing on mental health, personal development, and many aspects of daily living. Each features:

- Personalized self-paced assistance
- Strategies for better and healthier living
- Complete anonymity
- **FREE** services no matter how often accessed
- Help available 24 hours per day, seven days per week



For assistance, contact ACI Specialty Benefits at
800.932.0034 or askaffinity@acispecialtybenefits.com



Your EAP offers *unlimited* resources and referrals.

From everyday stress to relationship issues at work or home, the Employee Assistance Program provides support for overall health, well-being and life management. EAP benefits are 100% confidential and available to all employees and family members, regardless of location.

Program benefits include:

- Unlimited telephonic clinical assessment and referral
- 24/7 live answer, online, mobile and social access to services
- Local and international network of providers
- Support available in 180 languages
- All family members eligible for services

Unlimited work-life services include:

- Child, elder and pet care referrals
- Legal and financial consultation
- Education referrals and resources
- Referrals for personal services
- Health and wellness resources
- Veteran-specific support
- Community-based resource referrals

For comprehensive support for any work-life need, contact ACI today.

Call toll-free:

800-932-0034

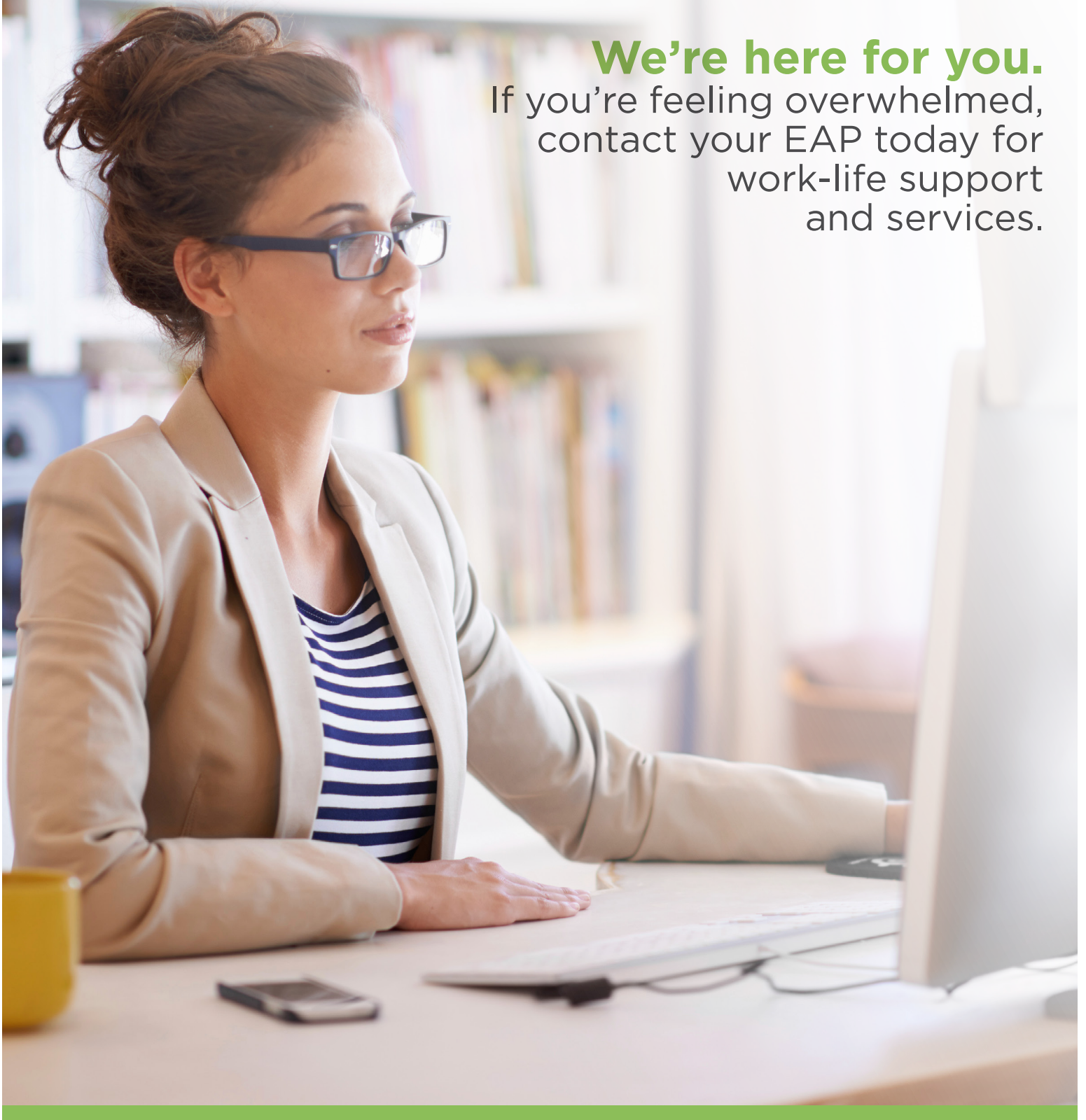
text: **858-224-2094**

email: eapinfo@acispecialtybenefits.com



Life is stressful.

We're here for you.
If you're feeling overwhelmed,
contact your EAP today for
work-life support
and services.



Call toll-free:
800-932-0034
text: **858-224-2094**
email: eapinfo@acispecialtybenefits.com

